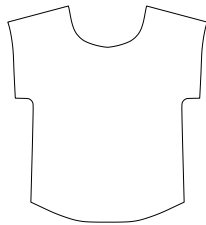
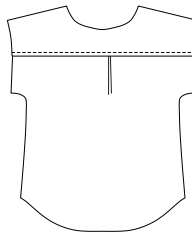


Bondi Top

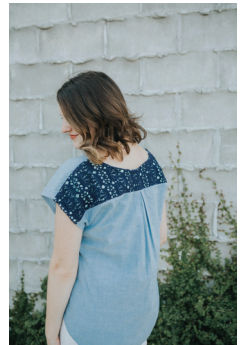
The Bondi Top is the absolute wardrobe staple and pairs perfectly with skinny jeans, a great pair of fitted harem pants, or tucked into a skirt. So versatile and a great way to show off fun prints. This top features a curved hem that is slightly longer in the back, and a contrast back yoke. Stylish Simplicity!



Front



Back



FABRIC SUGGESTIONS:

Rayon, Voile, lawn, linen and other light to medium weight woven materials.

NOTIONS:

Coordinating thread, scissors, iron, erasable marking pen, and glass head pins.

Allow approximately .5 yd/m extra to make bias strips or purchase 1yd/m premade bias.

FABRIC REQUIRED:

Based on 44"(110cm) width Fabric

Top	1.5 yd/m
Yoke	.25 yd/m

MEASUREMENTS:

	XS	S	M	L	XL	2XL	3XL	4XL
Bust	33-34" (84-87cms)	35-36" (89-91cms)	37-38" (94-96cms)	39-40" (99-101cms)	41-42" (104-106cms)	43-44" (109-112cms)	45-46" (113-117cms)	47-48" (119-122cms)
Waist	25-27" (63-68cms)	28-30" (71-76cms)	31-33" (79-84cms)	34-35" (86-89cms)	36-38" (91-96cms)	39-40" (99-102cms)	41-42" (104-107cms)	43-44" (109-112cms)
Hips	35-36" (89-92cms)	37-38" (94-96cms)	39-40" (99-101cms)	41-42" (104-106cms)	43-44" (109-111cms)	45-46" (114-117cms)	47-48" (119-122cms)	49-50" (124-127cms)

Follow and Stay Connected:



#SEWTOGROW



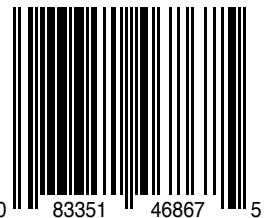
WWW.SEWTOGROW.COM.AU



ADMIN@SEWTOGROW.COM.AU



FACEBOOK.COM/SEWTOGROW



MADE IN AUSTRALIA